

How to make a booking

Call **01623 860 202** or email [admin@walesbyforest.org.uk](mailto:admin@walesbyforest.org.uk) to check availability or make further enquiries. We will need to know the contact's name, address, and the approximate number of people in your group.

We will then process your booking and send you your provisional booking information. Please sign and return the form with the appropriate deposit. When we receive the deposit, we will confirm your booking and forward the relevant information or programme. Numbers can be altered up to 4 weeks before arrival.

You can also visit our website at [walesbyforest.org.uk](http://walesbyforest.org.uk) for further information.

Booking conditions

Provisional bookings will be held for 14 days pending the receipt of your deposit. The deposit is 25% of the total booking fee and this will be shown on your provisional booking information. You must pay your deposit at least 12 weeks before arrival. As soon as we receive your deposit, your booking will be confirmed. The final balance is due 10 weeks before arrival.

Full terms and conditions are available from our website at [walesbyforest.org.uk](http://walesbyforest.org.uk).

General information

Arrival, Check-in/ Check-out

**Check-in time** is from 2.00pm on the day of arrival with full access to bedrooms/tents. On your **day of departure**, all accommodation must be vacated by 9.30am with secure lockable storage for luggage provided. Please return your lodge key to the main office by 12.00 noon at the latest. **Check-out time** is 12.00 noon.

Tented Village/Camp Provision

Tented Village includes: UPVC Framed tents with bunk beds plus use of wet weather marquee. Tented Camp includes: Standard Tents (variable sizes). Visitors should be aware that they will need their own sleeping bags, roll mats etc. Should you need catering facilities please book a marquee separately unless you have booked a package which includes catering.

Lodges

Visitors booked to stay in our lodges are asked to bring a sleeping bag/ bedding/pillow.

Inclusive Packages

Package activities are allocated and programmed by our planner. Please let us know your wish list when booking and we will endeavour to incorporate these subject to availability. Please note: Package programmes are on request until confirmed.

Wristbands

Wristbands cover activities for dark green weekends. Please check the Camping Calendar to plan your weekend. Activity wristbands are £22 for a full day and £12 for a half day per participant.

Marquees

Marquees 1 & 2 have a fully equipped kitchen area with 6-ring cooker, sink, water boiler, refrigerator with freezer, pots, pans, crockery and cutlery, tables and chairs, lighting and electricity points. Other marquees do not include equipment, but equipment can be hired.

Winter discounts

50% off lodges and camping in December, January and February, excluding organised events, subject to availability.

Payments

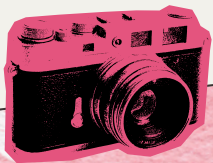
Provisional bookings will be held for 14 days. We cannot confirm the site allocation or accommodation until your deposit and booking form is received. Payments can be made by cash, debit/credit card or cheque payable to Walesby Forest. BACS payments also accepted, please ask for details.

Full payment required 10 weeks prior to arrival date. Prices are exclusive of VAT.

Groups

Price List 2026

Walesby Forest Est. 1938



[Walesbyforest.org.uk](http://Walesbyforest.org.uk)  
01623 860202

Charity no. 1147348

Walesby Forest  
Brake Road  
Walesby, Newark  
Nottinghamshire  
NG22 9NG

Activities Fees 2026

Activity	Duration	Max People	Price
Archery, Air Rifles, Tomahawks, Team Building, Laser Tag	1 ¼ Hour	12	£100.00
Cave Maze	1 ¼ Hour	20	£100.00
Outdoor Climbing 8m Wall, Abseil, Wobble Pole Climb, Jacobs Ladder, Leap of Faith, Crate Stack, Giant Crate Stack, Zip Wire, Kayaking or Canadian Canoes, Paddle Board	1 ¼ Hour	12	£116.00
Outdoor Climbing 12m Wall	1 ¼ Hour	8	£116.00
Assault Course or Low Ropes	1 ¼ Hour	20	£116.00
3G Swing or Indoor Climbing	1 ¼ Hour	12	£116.00
Swimming Pool	1 ¼ Hour	20	£151.00
River Crossing	2 Hour	12	£151.00
Raft Building	2 Hour	20	£151.00

Self Led Activities

Activity	Duration	Max People	Price
Nightline, Circus skills, or Giant Catapult	1 Hour	12	£30.35
Traverse Wall	1 Hour	20	£30.35
Pioneering Poles	N/A	N/A	£30.35
Frisbee Golf	1 Hour	20	£30.35
Orienteering (PP)	N/A	N/A	£2.10
Soft tomahawks	1 Hour	20	£30.35

General Fees

Day Entrance	Access to all facilities between 10am and 4pm	£4.55
Camping	Inclusive of facilities and showers	£13.95
Duke of Edinburgh	Inclusive of facilities and showers	£9.75

Deposits Non-refundable and non-transferable

Camping (Per site)	Balance due 10 weeks prior to arrival	25%
Inclusive Packages	Balance due 10 weeks prior to arrival	25%
Buildings & marquee hire	Balance due 10 weeks prior to arrival	25%
Camps for over 200	Balance due 10 weeks prior to arrival	25%

Group Sizes: maximum numbers must not be exceeded without prior agreement. Activities: activities commence from 9:30am. Activities required after 5pm are available on request. Please Note: Whilst every effort will be made to provide programmes as advertised, Walesby Forest reserves the right to change programmes in the event of insufficient bookings or circumstances beyond our control.

Residential Lodges, Tented Villages & Marquees

Tented Camp	Sites 16, 18, 19 & 20   traditional style tent	PP/PN	£21.85
Tented Village	Site 17   tents with bunk beds, maximum 36 persons, includes use of wet weather marquee	PN	£369.25
Parker Lodge	Maximum 33 persons	PN	£830.00
Parker Lodge Garden	Only if also booking Parker Lodge, camping for numbers in excess of 33 persons	PP/PN	£13.20
Sherwood Lodge	Maximum 36 persons	PN	£860.00
Walesby Lodge/Kemp	Maximum 36 (Kemp) 38 (Walesby) persons	PN	£900.00
Marquee 1	Site 3   24m x 12m (80’ x 40’) provision for 60	48 Hours	£617.00
Marquee 2	Site 16   18m x 12m (60’ x 40’) provision for 40	48 Hours	£454.00
Marquee 3	Site as required; 20m x 10m (65’ x 32’)	48 Hours	£396.00
Marquee 4	Site as required; 12m x 6m (30’ x 20’)	48 Hours	£131.35

Hire period: 2pm on day of arrival until 9:30am on the day of departure

Room Hire & Supplementary Services/Equipment

Suite/Lodge Hire	Meeting or conference areas, including refreshments			PH	£40.00
Meal Package	Breakfast, lunch and dinner			PH	£27.45
Breakfast	£10.00	Lunch	£10.00	Dinner	£11.35
Electric Hook Up	Inclusive of units used			48 Hours	£21.00
Heating surcharge	Catering barn heating				£15.75

Group Residential Package			1 Night	2 Nights	3 Nights
Residential Package	Includes lodge accommodation, meals, 4 activities per 24 hrs + Twilight Zone + 1 Leader per 12 students FOC - Min group size 24	PP/PN	£136.35	£112.65	£100.75
Tented Village Package	Includes tents with Bunk beds, meals, 4 activities per 24 hrs + Twilight Zone + 1 Leader per 12 students FOC - Min group size 24	PP/PN	£107.35	£94.70	£81.25
Tented Camp Package	Includes tents, meals, 4 activities per 24 hrs + Twilight Zone + 1 Leader per 12 students FOC - Min group size 24	PP/PN	£94.70	£83.90	£75.45
Group Day Package	Includes up to 4 activities - Min group size 12	PP			£44.30

All prices are exclusive of VAT. Unless otherwise indicated the rates above apply to the number of consecutive nights booked.